

## *Hilton Head Dance Theatre*



## *Hilton Head Dance Theatre*

Dear Friends,

The best way for each of us to support the Hilton Head Dance Theatre in its mission to promote dance as an art form in the Lowcountry is by becoming a member. Your membership will help to bring exciting productions to local stages as well as enable you to receive exclusive benefits and opportunities.

For over 25 years, Hilton Head Dance Theatre has proudly enabled countless Hilton Head Dance School students to perform in productions of a very high caliber by covering all of the expenses not related to instruction or rehearsal such as costumes, sets, rental of the facility, publicity and fees for guest artists and technical staff.

Now, please take a moment to review the many benefits that you will receive at each level of membership, choose your level of support and join us as we celebrate another year of excellence!

Thank you,

*Karena Brock-Carlyle and John Carlyle*  
Artistic Directors  
Hilton Head Dance Theatre

---

### HILTON HEAD DANCE THEATRE BOARD OF DIRECTORS

President:

Lori Finger

Vice President:

Karena Brock-Carlyle

Treasurer:

Elizabeth Walsh

Secretary:

Maggie Karis

Board Members:

John Carlyle

Carrie Collins

Andrea Gannon

Lara Garniewicz

Missy Santorum

Christy Simpson

## *Positions for Success*

### **Pirouette..... \$50-\$149**

- Opportunity to buy up to six tickets for *The Nutcracker* and six tickets for *The Spring Gala* one week before the general public.
- 10% discount on boutique purchases
- Performers of Dance Theatre member families will be chosen at random to present flowers at major performances
- Acknowledgment in all performance programs

### **Arabesque..... \$150-\$249**

#### **All of the above benefits plus:**

- Opportunity to buy an unlimited number of tickets to *The Nutcracker* and to the *Spring Gala* one week before the general public

### **Grand Jeté.....\$250-\$499**

#### **All of the above benefits plus:**

- Two complimentary tickets to *The Nutcracker*

## *The Classics*

### **Coppélia .....\$500-\$999**

#### **All privileges afforded to "Position for Success" members plus:**

- Four complimentary tickets to *The Nutcracker*
- ¼ page advertisement in the performance programs

### **Giselle .....\$1,000-\$2,499**

#### **All of the above benefits plus:**

- Complimentary ½ page advertisement in the performance programs

### **Swan Lake.....\$2,500-3,999**

#### **All of the above benefits plus:**

- Complimentary ¾ page advertisement in the performance programs

### **Nutcracker..... \$4,000-\$4,999**

#### **All of the above benefits plus:**

- Complimentary full page advertisement in the performance programs

## *Sponsors*

### **Silver Sponsor..... \$5,000-\$9,999**

#### **All of the above benefits plus:**

- Ten tickets to *The Nutcracker* and *The Spring Gala*
- Full page advertisement in all performance programs
- Corporate logo included in Hilton Head Dance Theatre advertisements, promotions and website

### **Gold Sponsor .....\$10,000 and higher.**

#### **All of the above benefits plus:**

- Twenty tickets to *The Nutcracker* and *The Spring Gala*
- Full page advertisement in all performance programs placed on the inside front or back cover
- Corporate logo included in Hilton Head Dance Theatre advertisements, promotions and website

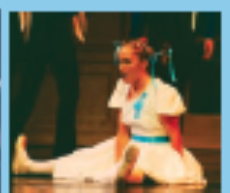
## *Our 2011-2012 Season*



November 11-19, 2011  
*The Nutcracker*  
The Visual &  
Performing Arts Center

March 30-31, 2012

Spring Gala featuring *Sleeping Beauty Act III*, *Rich Man's Frug* and *Graduation Ball*  
Visual and Performing Arts Center



May 18 -20, 2012

*Terpsichore Too & Spring Youth Performance - Magic Toy Shop*  
Visual and Performing Arts Center

August, 2012

*A Summer Gala*  
Visual and Performing Arts Center

Visit our website at [HHD.org](http://HHD.org)

## *Come Dance with us!*

*Thank you for keeping us on our toes!*

*Membership Chair:*

*Lori Finger, lorifinger@mac.com, 843-689-9686*

Are you a Hilton Head Dance School family? \_\_\_\_\_

Yes, I want to become a member of the Hilton Head Dance Theatre!

Date \_\_\_\_\_

Name \_\_\_\_\_ Phone \_\_\_\_\_ Cell \_\_\_\_\_

Address \_\_\_\_\_

City \_\_\_\_\_ State \_\_\_\_\_ Zip \_\_\_\_\_

Level of Sponsorship \_\_\_\_\_ Email \_\_\_\_\_

Enclosed is a check payable to the Hilton Head Dance Theatre for \$ \_\_\_\_\_

\_\_\_\_ Mastercard \_\_\_\_ Visa Card Number \_\_\_\_\_ Exp. Date \_\_\_\_\_

Please mail this form along with your check to:

Hilton Head Dance Theatre PO Box 5761 Hilton Head Island, SC 29938 or visit our website at [HHDT.org](http://HHDT.org)

Sponsorship of individual performances and gift-in-kind contributions are tax deductible to the full extent of the law. Your contributions support Hilton Head Dance Theatre productions (including professional dancers, costumes and sets, etc.), bringing professional companies to Hilton Head Island and a Scholarship Fund for dance students.